

**2018 AMA Hillclimb
Grand Championship
July 27 - 29, 2018**

**QUABOAG RIDERS
MOTORCYCLE CLUB
MONSON, MA**

Rider Name: _____ Age & Birthdate: _____
 Address: _____ AMA #: _____
 _____ Exp. Date: _____
 City, State: _____ Phone Number: _____
 Zip Code: _____ Email: _____

Select up to 4 classes (3 classes for youth riders) you wish to enter (\$50* per class):

✓	<u>Machine Brand</u>	<u>Class</u>		✓	<u>Machine Brand</u>	<u>Class</u>
		Micro Mini				Open
		65				Senior
		Mini Junior				Super Senior
		Mini Senior				Women
		Mini Girls				400 Stock
		Super Mini				Open Stock
		125				2-Stroke
		200				4-Stroke
		250				Vintage
		450				ATV 450
		600				ATV Open
		750				ATV Senior
						Verticross (\$45*)

Sponsors:	
------------------	--

Competitors get free weekend gate passes - additional gate passes are available for non-competitors for \$20 for the weekend (children under 12 are free). Weekend Camp passes are available for \$40.

<u>Number of additional weekend gate passes (\$20 per person):</u>	
<u>Weekend Camping Pass on QRMC grounds (\$40 per family):</u>	

Event t-shirts and programs are available for pre-purchase at a discounted rate. T-shirts are \$15 each (\$20 on-site) \$2 extra for XXL - indicate quantity of each size desired below (all men's sizes). Programs are \$4 each (\$5 on-site). On-site quantities will be limited and will likely run out during the weekend. Can coolers are available for \$1 each. Weekend Gate pass is \$20, competitors and under 12 free. Weekend Camping Pass \$40. Pit Vehicle Pass (no pitbikes) \$10

<u>Small:</u>		<u>Medium:</u>		<u>Large:</u>		<u>XL:</u>		<u>XXL:</u>	
<u># of Programs:</u>		<u># of Can Coolers:</u>							
<u>Pit Vehicle:</u>									

Online Registration: there is an option to mail a check

<https://quaboagriders.redpodium.com/2018-ama-hillclimb-grand-championship>



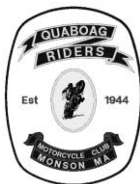
**2018 AMA Hillclimb
Grand Championship
July 27 - 29, 2018**

**QUABOAG RIDERS
MOTORCYCLE CLUB
MONSON, MA**

The following classes will be run in accordance with the 2018 AMA rulebook and supplemental regulations as appropriate:

1. **Micro Mini:** 4-8 years old, 0-50cc, maximum 12" wheels, automatic transmission.
 - a. If the machine has a manual transmission, it is acceptable to place the machine in gear at the starting line and remove the shift lever so that it can't be shifted on the hill.
2. **65:** 6-11 years old, 0-65cc 2-stroke and 0-90cc 4-stroke, maximum 14" wheels.
3. **Mini Junior:** 7-11 years old, 52-85cc 2-stroke and 52-125cc 4-stroke, maximum 16" rear and 19" front wheels.
4. **Mini Senior:** 12-15 years old, 66-85cc 2-stroke and 75-125cc 4-stroke, maximum 16" rear and 19" front wheels.
5. **Mini Girls:** Female riders 4-15 years old, 0-85cc 2-stroke or 0-125cc 4-stroke, maximum 16" rear and 19" front wheels.
6. **Super Mini:** 12-15 years old, 99-112cc 2-stroke and 99-150cc 4-stroke minicycles with 16" rear and 19" front wheels.
7. **125:** 86-125cc motorcycles
8. **200:** 126-200cc 2-stroke and 126-250cc 4-stroke motorcycles
9. **250:** 201-250cc motorcycles
10. **450:** 251-450cc motorcycles
11. **600:** 451-600cc motorcycles
12. **750:** 601-750cc motorcycles
13. **Open:** Motorcycles 751cc and larger
14. **2-Stroke:** 2-stroke motorcycles with engines 86-600cc
15. **4-Stroke:** 4-stroke motorcycles with engines 86-600cc
16. **Senior:** Riders at least 40 years old, any size motorcycle
17. **Super Senior:** Riders at least 50 years old, any size motorcycle
18. **Women:** Female riders at least 12 years old on any motorcycle or minicycle with an engine displacing at least 86cc. Must be at least 14 years old to ride a motorcycle larger than 250cc.
19. **400 Stock:** Motorcycles 86-400cc with engines in matching frames and stock wheelbase.
20. **Open Stock:** Motorcycles 401cc and larger with engines in matching frames and stock wheelbase.
21. **Vintage:** 1982 or older motor and frame with a maximum of 3 cylinders
22. **ATV 450:** ATVs with engines up to 450cc
23. **ATV Open:** ATVs with engines 451cc and larger
24. **ATV Senior:** Riders at least 40 years old riding any ATV
25. **Verticross:** 2 riders compete head-to-head! Format TBT.... See *Verticross National Championship* Section for more details.
26. **King of the Hill:** The top ten fastest times of the weekend from each lane, inclusive of ATV classes and exclusive of youth classes, will compete in a one-run class at the end of the program on Sunday for the King of the Hill championship, for which only one award is provided. There is no additional entry fee for this class.





**2018 AMA Hillclimb
Grand Championship
July 27 - 29, 2018**

**QUABOAG RIDERS
MOTORCYCLE CLUB
MONSON, MA**

Be aware that machines can only be entered one time in a given class - machines can be entered in multiple classes, by the same or different riders, granted that all other class rules are followed. For example, Sven and Lena cannot both ride the same 250cc machine in the 250 class - however, Sven could ride it in the 250 class, and Lena could ride it in the Women's class.

All machines must comply with the AMA rulebook and any applicable supplementary regulations, such as use of tethered kill switches and functional brakes.

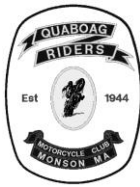
Note that a copy (do not send originals) of the rider's birth certificate is required for age verification for youth class riders - please submit with your entry form. If one or both parents will not be attending the event, you are required to have a minor release form filled out and notarized, which you must also submit with your entry form. [Click here for the AMA minor release form](#). A photocopy of a current AMA Annual Liability Release card is also acceptable. Be sure to have it with you at rider check-in on Friday.

Youth class notes:

1. The rider must be physically capable and mature enough to control his/her machine at all times, and to ride it safely. This includes stopping, starting, standing still, mounting, dismounting, and putting one or both feet on the ground. The referee has the authority to disqualify a rider who can't safely control his/her machine. *Training wheels are not allowed.*
2. Note that for the Super Mini class, a machine originally produced as an 85cc class minicycle can be modified to fit the class specification and be legal for this class (for example, take an RM85 and bore/stroke it to 99-112cc, and put big wheels on it).
3. Any rider that enters any youth class is considered a youth competitor, and may enter no more than 3 classes - including any amateur classes the competitor may be eligible for.

Verticross National Championship:

This will be the second time that a head-to-head class will be offered at a national championship! Verticross is a newer form of head-to-head competition...and won't require us to switch out timing systems. A designated dual light set up will be used for the start, when the lights turns GREEN...GO! If the lights turns RED, you left too early and are OUT! Similar to a drag race. In verticross 2 riders have to compete against each other up a designated course on the hill. If you haven't seen such an event, you can check some out on Youtube - like this one: <https://www.youtube.com/watch?v=RB7ujsjv3t8>



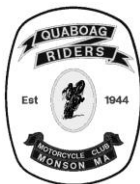
**2018 AMA Hillclimb
Grand Championship
July 27 - 29, 2018**

**QUABOAG RIDERS
MOTORCYCLE CLUB
MONSON, MA**

1. Verticross machines must be 450cc 4-Stroke or 500cc 2-Stroke motorcycles (plus the AMA overbore rule). So, a stock YZ450 could be used...and a KX500 with a 2mm overbore could also be used.
2. Verticross riders must be at least 16 years old.
3. All other amateur hillclimb rules apply - same fuel, same tires, etc.
4. In verticross, as in motocross, rubbin' is racin'. Incidental contact is of no consequence. However, if a rider causes a crash, he/she will be disqualified.
 - a. In such cases, determination of who was at fault for a crash is solely at the discretion of the acting referee, whose decision is final.
5. Verticross is not a timed event - the finish line referee makes the call on who won each match. In the event of a dead heat, the match is run again.
6. Only 3 awards are provided for verticross - and the entry fee is \$45, instead of \$50 like other classes.
7. This class does not count against your 4-class entry limit.
8. The same restriction for pro license holders applies to verticross as it does to amateur classes.
9. The Verticross National Championship will run in its entirety Saturday after the conclusion of the amateur program. Trophies will be awarded on Sunday during the regular trophy presentation.

Event info:

1. **There will be no late or on-site entries. All entries must be completed by June 29th, 2018 @ 6pm.**
2. If you have questions about the event, contact QRMC as early as possible.
3. Camping on site is \$40 for the weekend.
4. Parking space is limited. Please be considerate when setting up pit/camp areas.
5. Gates open at 9:00AM on Friday and will be closed and locked at 9:00PM.
6. Rider check-in and tech inspection begin at 9AM on Friday, and end at 6:00PM.
7. Mandatory riders meeting at 6:30PM on Friday.
8. Gates open at 6:00AM Sat. & Sun and will be closed and locked at 9:00PM each night.
9. Competition begins at 8:00AM each day.
10. All trailers/vehicles must be gone by noon on Monday.
11. All pit vehicles (of any kind... golf carts, ATVs, etc.) must be registered before being used on the event grounds. Registration is \$10 per vehicle.
 - a. Due to space constraints, large pit vehicles (like ATVs and golf carts) are discouraged unless needed for legitimate mobility concerns.
 - b. NO pit bikes, NO pit riding
12. QRMC is not responsible for the security of your person or property while on the event grounds.



**2018 AMA Hillclimb
Grand Championship
July 27 - 29, 2018**

**QUABOAG RIDERS
MOTORCYCLE CLUB
MONSON, MA**

13. Please do not unnecessarily bring pets to the event. If you must bring a pet, it must be leashed at all times, and you are fully responsible for it and its actions. Naturally all service animals are welcome.
14. All attendees are expected to conduct themselves in an environmentally responsible manner...such as refraining from dumping gas, oil, and antifreeze on the ground.
15. All attendees are expected to clean up after themselves and make use of the trash receptacles provided around the event grounds.
16. No open fires are allowed - grills may be used so long as they are operated responsibly.
17. Glass containers (such as pop/beer bottles) are prohibited from the event grounds. Please make use of aluminum cans and/or plastic bottles only.
18. If you are riding multiple classes, it is your responsibility to ensure that you and your machines are ready to compete at the designated times. If, because of the dual-lane program, you cannot ride in your assigned order in a given class, you will be given a grace period of 5 positions to make your way to the starting line. It is incumbent upon you to make sure you have your machines and whatever necessary assistance from pit crew to make your assigned runs in a timely manner. Rides that are not taken within 5 positions of your assigned order will be forfeited.
19. On Sunday, all riders who have a reasonable expectation of placing in the top 5 in their class must impound their machines in the impound area immediately after coming down the hill. In the event that the same machine is to be used in a later class, inform the impound staff and obtain their acknowledgement before removing the machine from the impound area for the next class. Any adjustments or repairs to the machine in anticipation of its next class must be performed in the impound area. The machine must be immediately returned to the impound area after riding in that additional class.
20. All machines must be operated at idle speeds when going to and from the hill. No other riding is allowed. Helmets **MUST** be worn at ALL times, NO passengers allowed.
21. In the event that a re-ride is necessary for any reason, the rider and machine must report directly back to the staging area without returning to the pits. No adjustments or modifications can be made to the machine, such as gearing changes, although necessary repairs may be made with the acknowledgement of the event referee - for example, if on the ride for which a re-ride is needed the rider crashed and broke the clutch lever, the clutch lever may be replaced before the re-ride is taken. Any such repairs must be affected in the staging area under the supervision of the event referee and/or other QRMC staff.
22. Riders are required to be wearing appropriate protective riding gear, as specified in the AMA rulebook/supplemental regulations.



**2018 AMA Hillclimb
Grand Championship
July 27 - 29, 2018**

**QUABOAG RIDERS
MOTORCYCLE CLUB
MONSON, MA**

23. Riders have 2 minutes to make their attempt on the hill after being directed into the starting area by the referee. In the event that there is a delay in the program greater than those 2 minutes, such as an injured rider needing assistance off the hill, the rider must be ready to make his/her attempt immediately after the hill is declared clear by the referee. If an issue arises at the line that would prevent the rider from making an attempt on the hill, the rider will be asked to move their machine back into the staging area and will be given 15 minutes to fix the issue and return to the starting line. If the 15 minutes expire and the rider is not able to make their attempt, that attempt is forfeited.
24. Note that current AMA pro license holders are ineligible to compete in amateur championship events. Former AMA pro license holders must wait a year for eligibility to reinstate.

Online Registration:

<https://quaboagriders.redpodium.com/2018-ama-hillclimb-grand-championship>

If you prefer to Mail your registration you must fill out the form on page #1 and enclose a check or money order (do not send cash) for \$50 per class entered plus noted fees for other items. Make checks/money orders payable to Quaboag Riders Motorcycle Club and return with this completed form (and youth birth certificates & minor release forms, if applicable)

postmarked by June 29th, 2018 to:

Quaboag Riders M/C
C/O Jim O'Connell
PO Box 251
Monson, MA 01057

Contact info for any questions you may have:

Jim O'Connell 413-267-0322
Justin Linde 508-254-2961
Email: qrmc1944.nationals@gmail.com

Note that riding order will be determined by how soon you get your entry in! First entry rides last - last entry rides first! Entries limited to 800 - any entries received beyond 800 will be returned and refunded.

AMA website: www.AmericanMotorcyclist.com



RIGHTS. RIDING. RACING.

(800) AMA-JOIN
AmericanMotorcyclist.com



**2018 AMA Hillclimb
Grand Championship
July 27 - 29, 2018**

**QUABOAG RIDERS
MOTORCYCLE CLUB
MONSON, MA**

Directions:

From Minnesota: Get on I-94 E in Monticello from MN-64 S and US-10 E 2 h (121 mi) Follow I-94 E and I-90 E to Palmer. Take exit 8 from I-90 E 20 h 9 min (1,355 mi) Continue on MA-32 S. Drive to King Ave in Monson 14 min (6.5 mi)

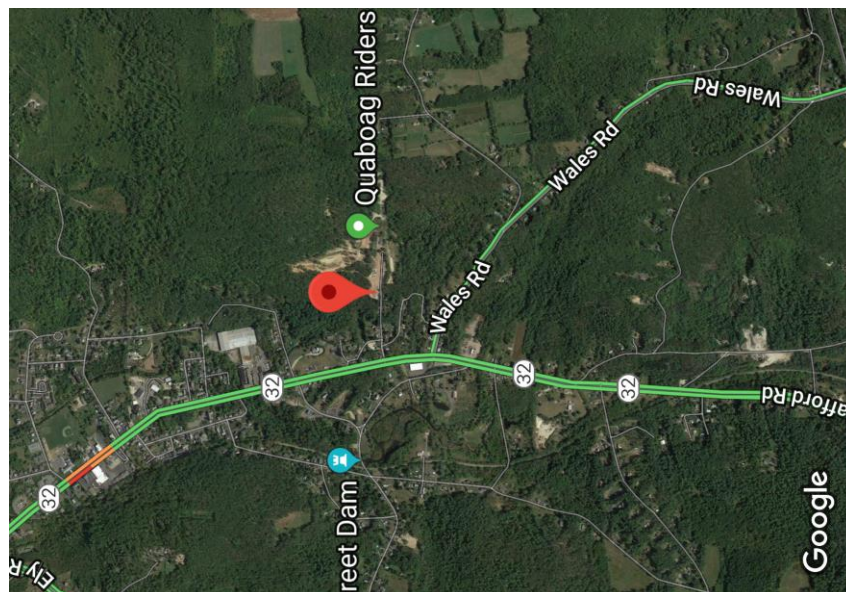
From Wisconsin: Get on I-41/US-41 S from WI-23 E/WI-23 Trunk E 22 min (17.1 mi). Follow I-41, I-94 E and I-90 E to Palmer. Take exit 8 from I-90 E 16 h (1,064 mi) Continue on MA-32 S. Drive to King Ave in Monson 14 min (6.5 mi)

From Illinois: Get on I-74 in Montgomery Township from County Rd 2800 E/Washington Rd, US-150 E and County Line Rd 11 min (8.6 mi) Follow I-55 N, I-80 E and I-90 E to Palmer. Take exit 8 from I-90 E 15 h 19 min (1,030 mi) Continue on MA-32 S. Drive to King Ave in Monson 14 min (6.5 mi)

From Iowa: Get on I-80 E in Newton from County S62 N and IA-14 S 19 min (16.1 mi) Follow I-80 E and I-90 E to Palmer. Take exit 8 from I-90 E 17 h 44 min (1,195 mi) Continue on MA-32 S. Drive to King Ave in Monson 14 min (6.5 mi)

From Tennessee: Get on I-840 E/TN-840 in Williamson County from Halls Mill Rd and US-41A N 35 min (25.1 mi) Continue on I-840 E/TN-840. Take I-40 E, I-81 N, I-78 E and CT-15 N to CT-32 N/River Rd in Willington. Take exit 70 from I-84 E 15 h 24 min (1,028 mi) Follow CT-32 N/River Rd, Monson Rd and MA-32 N to King Ave in Monson 23 min (14.6 mi)

From Virginia: Get on I-64 E in 4 from State Rte 640, US-60 E and US-522 N 1 h 19 min (62.1 mi) Continue on I-64 E. Take I-95 N, I-395 N, Baltimore-Washington Pkwy, MD-295 N, ... and I-84 E to CT-32 N/River Rd in Willington. Take exit 70 from I-84 E 7 h 25 min (478 mi) Follow CT-32 N/River Rd, Monson Rd and MA-32 N to King Ave in Monson 23 min (14.6 mi)





**2018 AMA Hillclimb
Grand Championship
July 27 - 29, 2018**

**QUABOAG RIDERS
MOTORCYCLE CLUB
MONSON, MA**

Please note that there IS CAMPING onsite. See *Event Info* for details. However, if you prefer a Campground or Hotel/Motel here is a comprehensive list:

Camping:

- **Sunsetview Farm Camping Area - 57 Town Farm Road, Monson, MA**
Phone: (413) 267-9269 camp@sunsetview.com

- **Partridge Hollow Camping Area - 72 Sutcliffe Road, Monson, MA**
Phone: (413)267-5122 partridgehollow.com

- **Oak Haven Family Campground - 22 Main Street, Wales, MA**
Phone: (413)245-7148 camp@oakhavencampground.com

- **Village Green Family Campground - 228 Sturbridge Road, Brimfield, MA**
Phone: (413)245-3504 villagegreencampground.com

Hotels/Motels:

- **Comfort Inn & Suites - 83 Hall Road, Sturbridge MA 01566 1-508-347-3306**
- **Hampton Inn - 328 Main Street Sturbridge MA 1-508-347-6466**
- **Holiday Inn Express & Suites - 21 New Boston Road, Sturbridge, MA 1-508-347-8000**
- **Super 8 - 358 Main Street, Sturbridge, MA 1-774-490-8816**
- **Sturbridge Host Hotel - 366 Main Street, Sturbridge, MA 1-508-347-7393**
- **Days Inn - 400 Rt.15, Sturbridge, MA 1-508-347-1978**
- **Economy Lodge - 408 Main Street, Sturbridge, MA 1-508-347-7327**